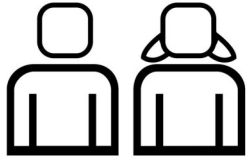


## Building a Community that Does Not Tolerate Domestic Violence & Sexual Assault

**114** students gained leadership skills through school based clubs working to change the campus culture.



**2,269**

students received education regarding healthy relationships, consent & teen dating violence.

**21** businesses empowered their employees to **RECOGNIZE, RESPOND & REFER** coworkers experiencing domestic violence through



**1,113** men walked a mile in women's high heels and raised **\$352,000**

as part of Walk a Mile in Her Shoes 2015.



WEAVE's Walk a Mile in Her Shoes is the largest in the WORLD!

## Ensuring Survivors Get the Help They Need to Be Safe & Thrive



**10,668** callers to the Support & Information Line received support & referrals.



**220** women, **10** men & **246** children experienced **14,515** nights of safe sleep at the Safehouse.



**698** survivors of domestic violence & sexual assault healed through individual counseling.

**723** survivors of domestic violence became stronger through group counseling.



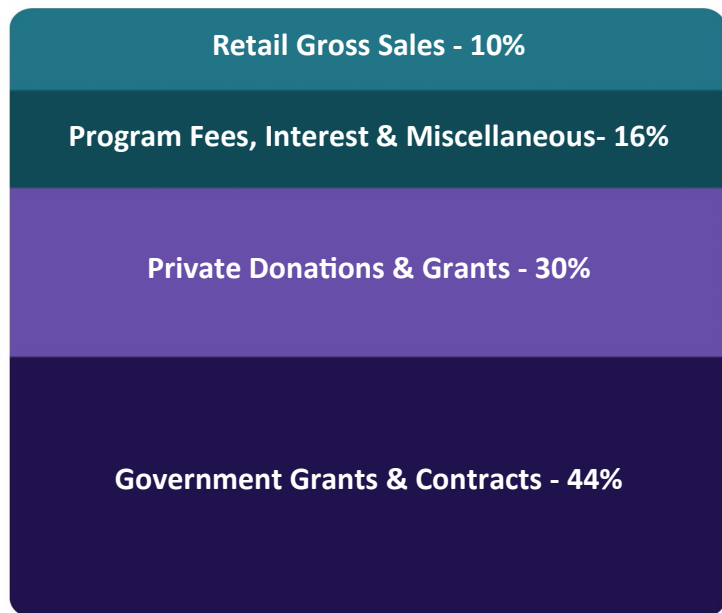
**218** sexual assault survivors undergoing an evidentiary examination were supported by a 24/7 Sexual Assault Response Team Advocate.



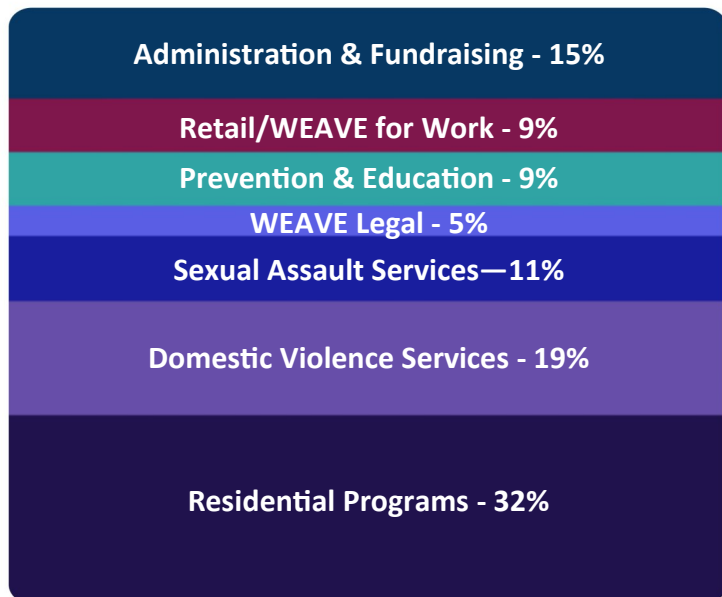
**676** survivors overcame legal barriers through workshops, consultations, accompaniments & limited scope representation.

## Investing Resources Wisely

### Revenue

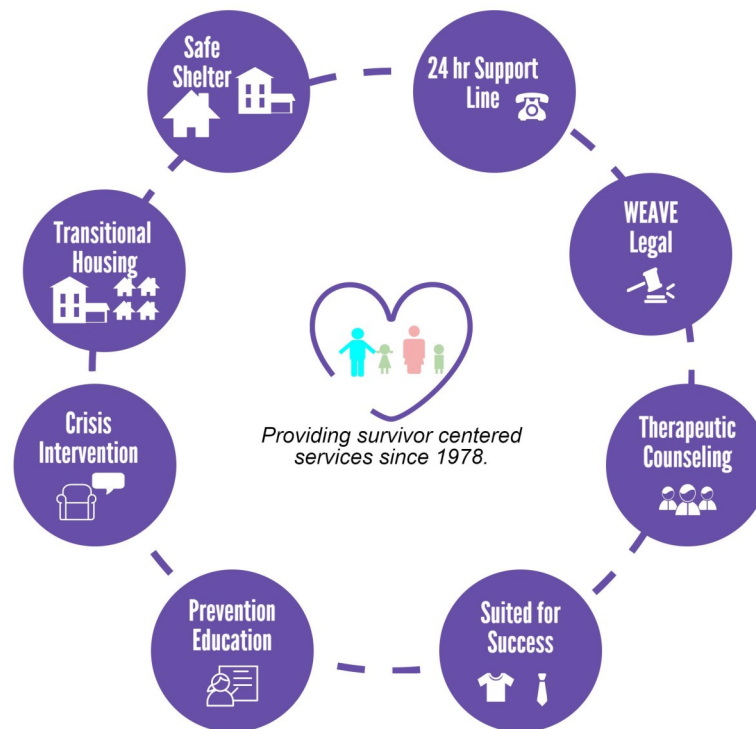


### Expenses



# Impact Report

July 1, 2014—June 30, 2015



*to build a community that does not tolerate domestic violence and sexual assault and provides survivors with the resources they need to be safe and thrive.*

**1900 K Street  
Sacramento, CA 95811  
Business Line: 916.448.2321  
[www.weaveinc.org](http://www.weaveinc.org)**